



## FLAG's Notice Board

### Dates for your Diary 2016

- 7 April** Drop in
- 14 April** Drop in
- 21 April**  
Tea, Coffee, Cake  
Social Afternoon
- 28 April** Drop in
- 5 May**  
Committee Meeting
- 12 May** Drop in
- 19 May**  
Tea, Coffee, Cake  
Social Afternoon
- 26 May** Drop in
- 2 June**  
Committee Meeting
- 9 June** Drop in
- 16 June**  
Tea, Coffee, Cake  
Social Afternoon
- 23 June** Drop in
- 30 June** Drop in

## Friendship Link & Action Group become a registered charity

### FLAG's REGISTERED CHARITY NUMBER : 1165681

February 22<sup>nd</sup> was a momentous day in FLAG's history. The Committee received confirmation, that after months of work, we were successful in becoming a registered charity with the Charity Commission (the organization responsible for regulating charities).

FLAG members will not notice much difference in the day to day running of FLAG, but the benefits to the charity include: trustees have limited Liability, should

anything go wrong, we can have up to £25,000 in the bank opposed to £5000 and it will be easier to apply for funds.

Anybody interested in FLAG, funders etc, can see FLAG's activities, purposes, our new constitution and trustees by typing our charity number into the Charity Commissions online register. Check us out at : <http://apps.charitycommission.gov.uk>

It is very exciting that this has coincided with our tenth anniversary and I would like to thank the Committee for their commitment to this lengthy process, with special thanks

to **Tracey Brightman** who worked alongside me on this project.

Well done to Everyone.

**Laura Peggs**  
(Chairperson)

### 10 years of FLAG.

This is a bumper edition of the FLAG News. To celebrate FLAG's tenth Anniversary FLAG will be having an "Anniversary Party" on the evening of the **8th June** at Bedford Ath Rugby Club, Wentworth Drive. It will be a Buffet, a Disco and a Bar.

So put the date in your diary.



## Thursday Afternoons.

FLAG meets most Thursday afternoons between 2.00pm and 4.00pm at Priory Methodist Church, Newnham Avenue, Bedford. Any member is welcome to come along.



FLAG Bedford



Kaye

Our **TEA/COFFEE AFTERNOONS** are usually the third week of every month, **COMMITTEE MEETINGS** are every six weeks and the rest are **DROP-INS**.



Thursday Afternoons.





## Thursday Afternoons continued.



**Simon & Laura**



**Brendan & Gordon**



**Jan & Lisa**

Members are welcome to come to Committee Meetings and have their say but must understand that these are formal meetings.



**Some of our Committee Members, Ros, Brendan, Laura & Tracey & our Administrator Linda**



# Harry Potter World. 24th February 2016.

## THE JOURNEY.



It was a dark grey misty morning (no it wasn't), frost covered the cobbled ground (no it didn't) and ghostly creatures lurked in the shadows of the White Horse Pub as each of the 30 FLAG members arrived for their journey to Hogwarts Castle (just getting in the mood for the day ahead). Platform 9<sup>3/4</sup> was closed for repair and the Hogwarts Express had run out of steam so instead we all boarded the usual coach from Motts, with our favourite trusty driver Steve at the wheel.

The journey took just over an hour as we arrived at the **Warner Brothers, Harry Potter Studios**. Our tour was booked for 2.00pm so we had plenty of time to have a bite to eat in the **Studio Cafe** and a look around the **Studio Gift Shop**.



Kaye, Hannah, Simon, Bernadette



Gordon with  
a Waffle  
on a Stick

Some of the FLAG gang patiently waiting to start the tour.





## Harry Potter World, continued.

**SOME BACKGROUND** - As the *Harry Potter* books were still being released and while the films were being made, the production crew saved many of the iconic sets, props and costumes in case they were ever needed later on in the series.

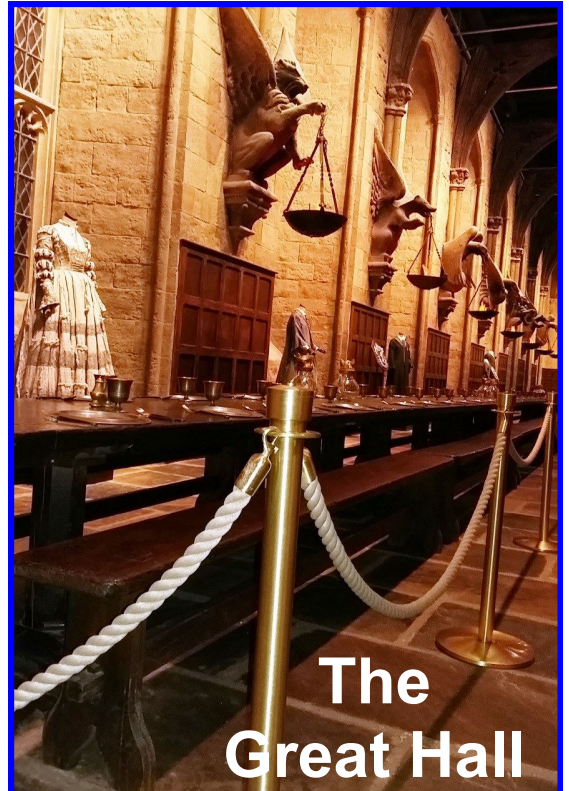
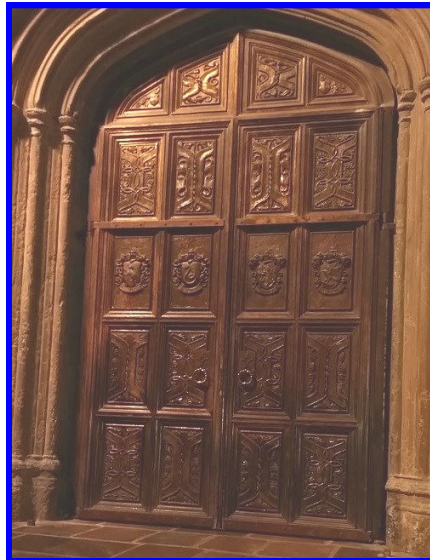
Once filming wrapped on the last *Harry Potter* film in 2010, the production crew were left with a treasure trove of thousands of intricate and beautifully-made artefacts, many of which wouldn't have been saved on a typical production.

The team behind *Warner Brothers Studio Tour London - The Making of Harry Potter* wanted to preserve and showcase these iconic props, costumes and sets so that *Harry Potter* fans could experience the magic of filmmaking first-hand. On 31st March 2012, the Studio Tour opened its doors. Set adjacent to the working film studios where all eight *Harry Potter* films were made, the **Studio Tour** offers visitors the unique opportunity to explore two soundstages and a backlot filled with original sets, animatronic creatures and breath-taking special effects.

FLAG had several wheelchairs, and so for Health & Safety reasons, we had to split up into two groups for the tour.

### THE GREAT HALL.

After a short film in the **Pre-Show Cinema** the huge doors opened and we entered into the spectacular **Great Hall** which included the costumes of students from each Hogwarts house plus two large tables which are set for dinner. At the top of the room was the teachers table where the Hogwarts professors sat.



The Great Hall

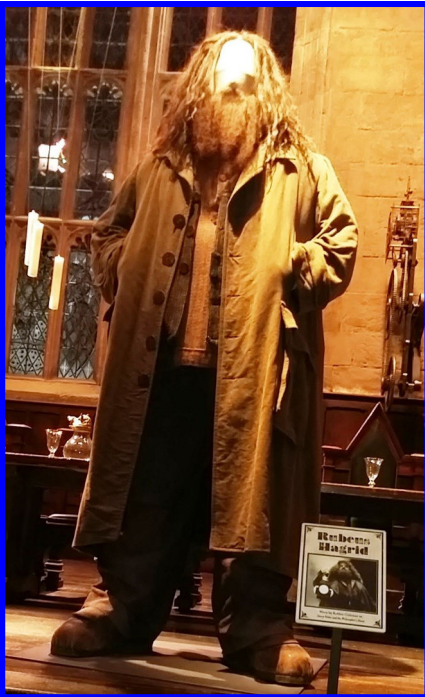


The Professors



## Harry Potter World, continued.

### SOME COSTUMES.

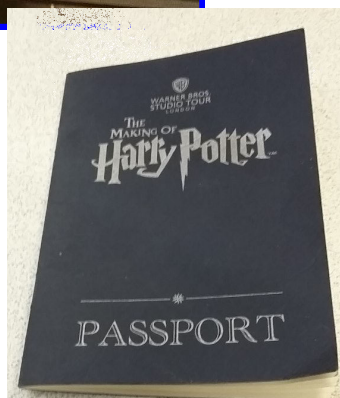


Harry Potter



### ACTIVITY PASSPORT.

Some of the FLAG Members collected their complimentary **Activity Passport** which included a fun golden snitch hunt. Six stations were placed throughout the tour where the passports could be stamped.





## Harry Potter World, continued.



Lisa



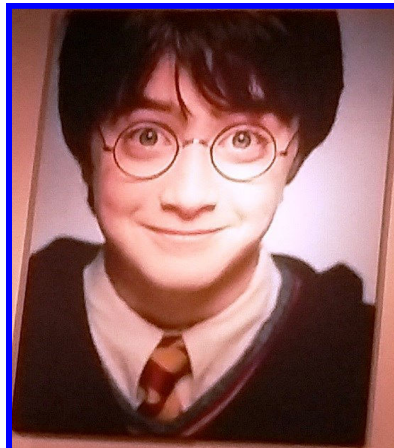
**HOGWARTS EXPRESS.** As we passed a Kings Cross station guards costume we entered the vast set of Kings Cross railway station and the wonderful **Hogwarts Express**. Visitors can pose with a luggage trolley on **Platform 9<sup>3/4</sup>** as it disappears through the stations yellow brick wall.



Simon



Jeff the Bear





## Harry Potter World, continued.



### THE INTERIOR CARRIAGE SET.

Visitors can walk along the trains adjoining carriage and sit in the interior carriage set that was used during filming. The interior carriage set is complete with 'windows' that demonstrate the process used to create iconic train scenes from the films such as the escape of Harry's first Chocolate Frog and the Dementor attack! The Production Designer on all eight Harry Potter films states: "The wizarding world doesn't have a need for modern technology so we knew a traditional steam engine would make the perfect school train. Before we began filming in 2000, we scoured the country and found 'Olton Hall' at a Preservation Centre in Lancashire.



**Laura & Jeff  
the Bear**



**Lisa**

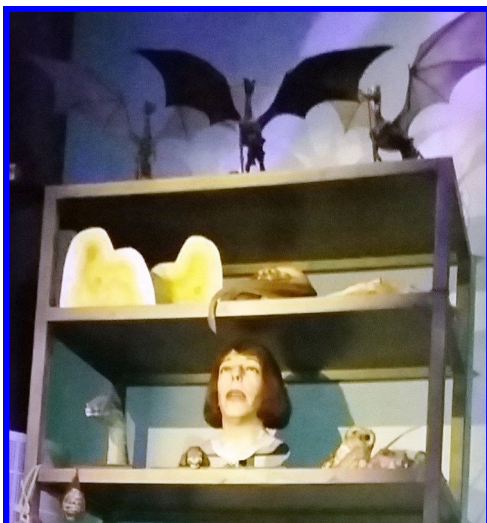


## Harry Potter World, continued.



### CREATURE EFFECTS.

The **Creature Effects** department created more than 200 mythical creatures over 10 years of filming, including a host of goblins, a number of house-elves and an 18 foot animatronic spider. Though the only practical model of **Buckbeak** that ever appeared on screen was the seated version curled up in Hagrid's pumpkin patch, the creature shop also built two standing life size animatronic models that could move their wings, nostrils, eyes, tongue and neck and one of those could bow and move two of its legs.



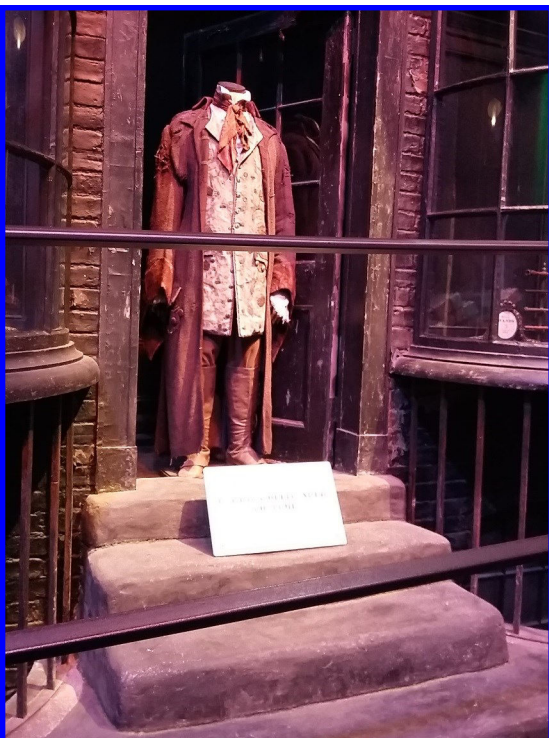
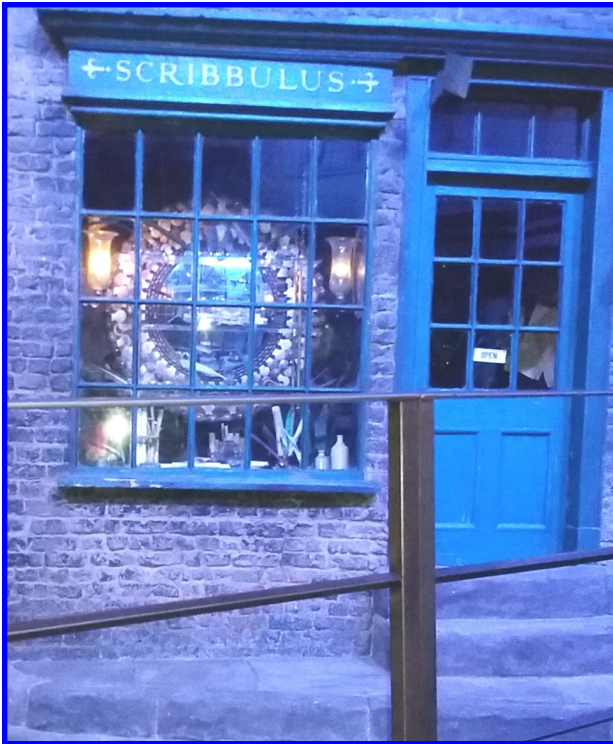


# Harry Potter World, continued.

## DIAGON ALLEY.

We walked along the cobbled set of **Diagon Alley**, which is a street and shopping area located in London behind a pub called the Leaky Cauldron.

We passed **Ollivanders Wand Shop** and saw a 20 foot high mannequin in the front window of **Weasleys' Wizard Wheezes** of one of the twins. His costume was specially printed and made from dyed white felt.





## Harry Potter World, continued.



### THE BACKLOT.

The 22-foot tall ***Knight Bus*** was created from pieces of three vintage London double deckers. Two versions of the bus were built; one that was motorised and able to be driven and a stunt version that just spun around on a turntable.

***Number 4, Privet Drive*** was the quiet, suburban home of the Dursleys, the relatives who raised Harry Potter after his parents' unexpected deaths. All of the Privet Drive homes, except number four, were just facades - meaning that only the front of the house is finished. Number 4, however, has always included the interior rooms of the ground floor.



Though it was never in the original novel or script the Director invented the now iconic ***Hogwarts Bridge*** for Harry Potter and the Prisoner of Azkaban to make Harry and Hermione's journey with the ***Time-Turner*** more physical and

exciting. This is the only section of the bridge that was ever built the visual effects team created the remaining sections using computer generated effects.





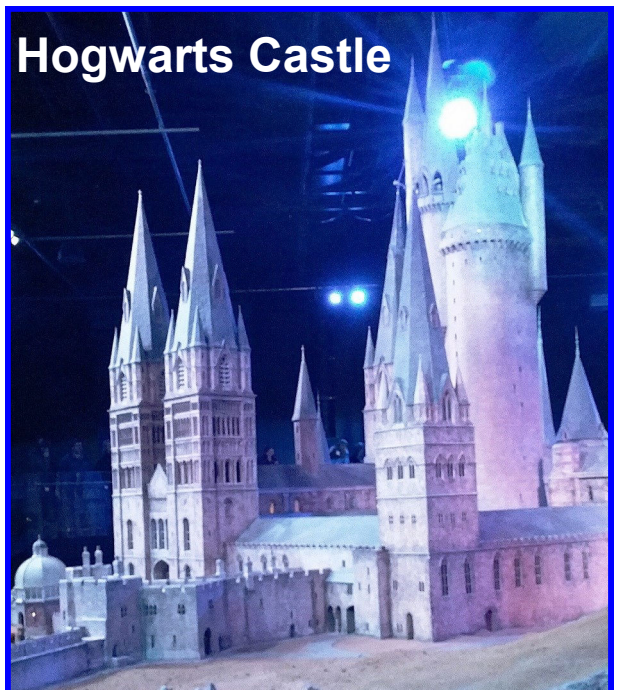
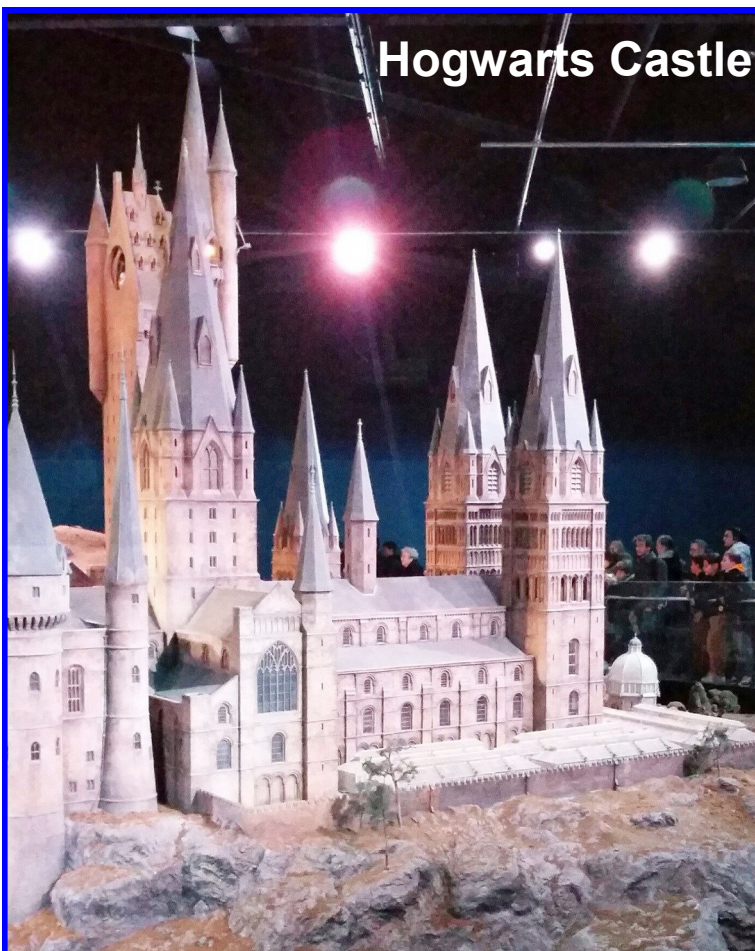
## Harry Potter World, continued.

### ART & GRAPHICS.

Before the actual set construction began, the Art Department created white card models. These models helped the director and production designer look at size and scale and determine camera angles.

### SCALE MODEL OF HOGWARTS.

The Art Department designed all of the sets and props seen through the Harry Potter film series in minute detail, including the breathtaking 1:24 scale model of **Hogwarts Castle** which was used for exterior shots of the magical school. The **Hogwarts Castle model** is the jewel in the crown of the Art Department. Built for the first film, the model's every courtyard, tower and turret were filmed and enhanced with digital effects to create realistic views of the magical school.





## Harry Potter World, cont.



### THE TOUR ENDS.

After just over two wonderful hours the tour ended, where else but the back of the Studio Gift Shop. The shop was selling every conceivable Harry Potter item.



### Studio Shop



### Butterbeer



The Harry Potter Tour is a celebration of the many unknown and unsung craftsmen working behind the camera & scenes to make the Harry Potter films as loved as they are. It has been designed and put together by people that really cared about what they were doing.

The Tour is split between 2 staggeringly giant sound studios (Studio J & Studio K - pure coincidence) and an outside area on the Leavesden lot.

FLAG members enjoyed 2 magical hours exploring the **Harry Potter Tour**. A big thank you to our Volunteers.





**FLAG'S  
Notice Board  
Dates for your  
Diary 2016**

**Bi-Monthly  
Events 2016/17**

**Event 1**

AGM 2015/Bufferet  
(27 April 2016)

**Event 2**

Birthday Party  
(Free) (8 June 16)

**Event 3**

Seaside Trip  
(Free) (TBC)

**Event 4**

Beetle Drive  
(TBC)

**Event 5**

Afternoon Tea at a  
Garden Centre  
(Free) (TBC)

**Event 6**

Christmas Meal  
(TBC) (Dec 2016)

**Event 7**

BBC Studio Tour  
(TBC) (Feb 2017)

**Fundraising Fetes**

St Paul's Church  
21st May 2016

Sharnbrook  
30th May 2016

## FLAG Funding News 2016/17

FLAG is always looking for funding and grants from Charitable Trusts. Three of half a dozen of our recent applications have been successful.

### The Big Lottery, Awards for All.

Awards for All offers grants of between £300 and £10,000 for grassroots and community activity that aims to improve life for local people and neighbourhoods. When FLAG began in 2006 we received a start-up grant of £5000 from the Awards for All programme. It was only fitting that we applied for and received £3343.75 from them to be spent in our tenth anniversary year. The money is to be used to pay for Room Hire at Priory Methodist on Thursday afternoons and Coach Hire and Taxi costs at our bi-monthly events.



**The Wixamtree Trust<sup>®</sup>**  
Supporting the communities and people of Bedfordshire

### The Wixamtree Trust.

This Trust makes grants to charitable bodies at the discretion of its Trustees. They focus most of their support on organisations based in Bedfordshire or projects that benefit the people of that county. Back in 2011 FLAG received £500 from the Trust to be spent on our outing to Woburn Safari Park. We decided to apply again and have received a cheque for £1000 to cover part of the cost of our Administrators Salary.

### The Panacea Charitable Trust.

The Panacea  
Charitable Trust  
Managed by



This Trust is managed by the local Bedfordshire and Luton Community Foundation. Their aim is to provide grants for projects run by community groups based in, or working for, the benefit of people in the town of Bedford. In 2011 the Trust gave us a cheque for £2000 towards Volunteer Expenses. We applied again and this time they were equally as generous with a grant of £3149. This will cover the rest of the cost of our Administrators Salary, Committee Expenses, Taxi Fares and Insurance.

FLAG would like to thank the three Trusts for their generous donations. We are all extremely grateful and their donations will be put to good use.

